



Comune di Santo Stefano del Sole  
Provincia di Avellino

P  
U  
C



### Piano Urbanistico Comunale

INDAGAZIONE  
Dott. Gennaro RAGANO

PROGETTISTA  
Arch. FEDERICO GABECO

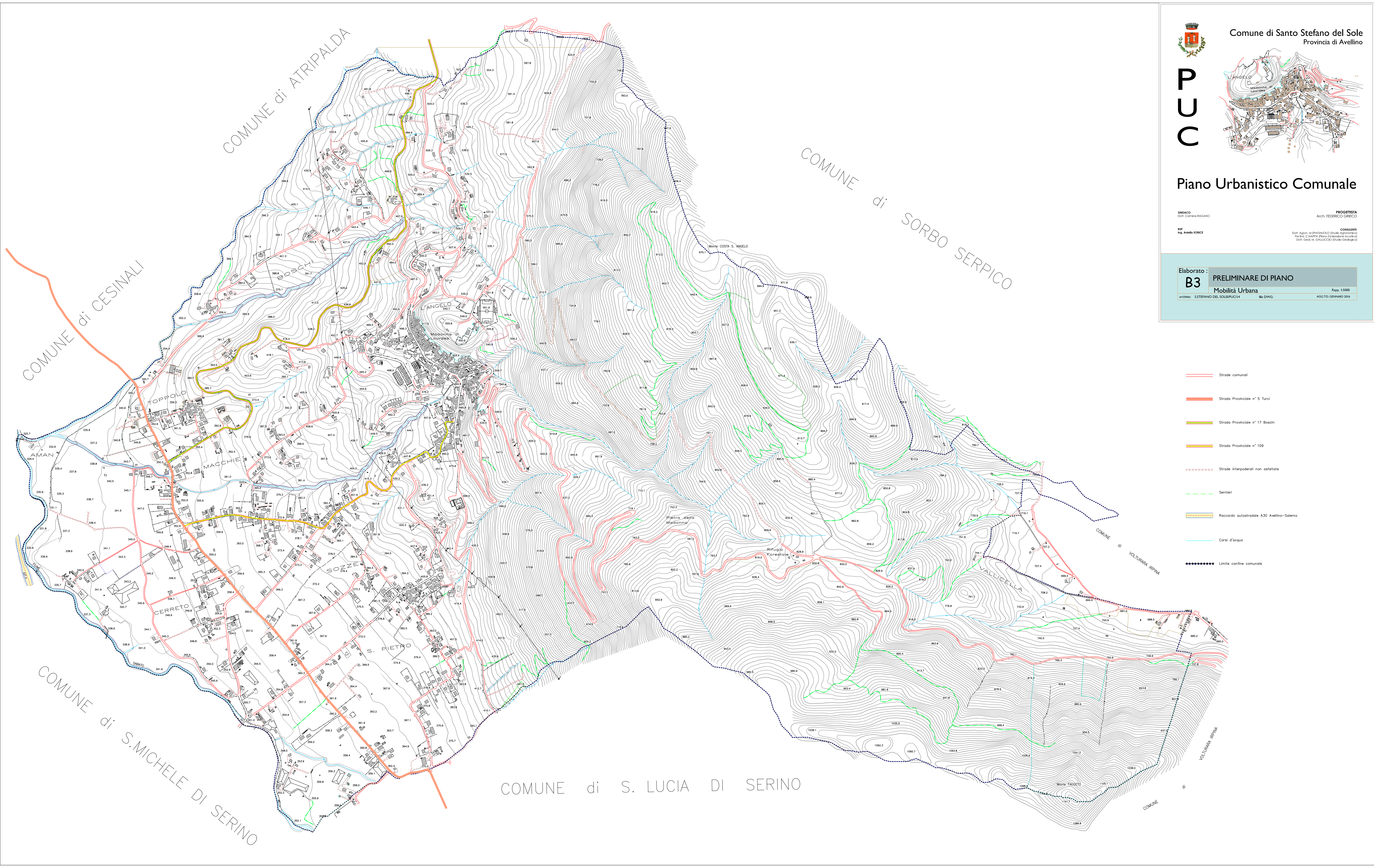
RUP  
Ing. ANIBALE SORICE









CONSIGLIERI  
Dott. Agostino SPACALUNGO (Dott. Agronomo)  
Dott. C. NAPPA (Piano Zonazione Acustica)  
Dott. Oreste M. GALICCO (Studio Geologico)

Elaborato:  
**B3** PRELIMINARE DI PIANO  
Mobilità Urbana

Scala: 1:5000

Arch. 66: S. STEFANO DEL SOLE/PU/14 Nr. DWG: AGG.TO GENNAIO 2014



-  Strade comunali
-  Strada Provinciale n° 5 Turci
-  Strada Provinciale n° 17 Boschi
-  Strada Provinciale n° 109
-  Strade interpoderali non asfaltate
-  Sentieri
-  Raccordo autostradale A30 Avellino-Salerno
-  Corsi d'acqua
-  Limite confine comunale